

# MiCA

supporting and promoting imported meat



2023

MEMBERSHIP  
DIRECTORY



<b>2023 Board Member Directory .....</b>	<b>2-5</b>
<b>2023 Committee Vice Chairs .....</b>	<b>6</b>
<b>Importers and End-Users .....</b>	<b>7-10</b>
<b>Brokers, Export Packers, and Associations.....</b>	<b>10-13</b>
<b>Cold Storage.....</b>	<b>13</b>
<b>Consultants and Service Providers.....</b>	<b>13-14</b>
<b>Customs Brokers.....</b>	<b>14</b>
<b>Trucking .....</b>	<b>14</b>
<b>Freight Brokers and Forwarders.....</b>	<b>14</b>
<b>Laboratories.....</b>	<b>14</b>
<b>Market Information and Research.....</b>	<b>14</b>
<b>Ocean Carriers.....</b>	<b>14</b>
<b>Ports.....</b>	<b>15</b>
<b>Re-Exporters.....</b>	<b>15</b>
<b>MICA Organizational Chart.....</b>	<b>16</b>
<b>Country Quota.....</b>	<b>16-19</b>

# 2023 Board Member Directory



**Fred A Sorbello, Chair**  
President, Sorbello Imported Meat Services, LLC  
fred@sorbelloimportedmeatservices.com  
+1 (609) 820-8555



**David Rind, Vice Chair**  
Manager, Rind International  
david@rindinternational.com  
+1 (425) 785-2915



**Don Stewart, Treasurer and Nominating  
Committee Chair**  
President, Stewart-Miller Inc.  
dstewart@stewmil.com  
+1 (847) 910 1297



**Tim Arndt, Trade Policy  
Committee Chair**  
Director, Link Snack's Inc.  
Timothy.Arndt@jacklinks.com  
+1 (715) 466-6162



**Andrew Banchi**  
Director of Procurement, Birchwood Foods  
abanchi@bwfoods.com  
+1 (262) 859-2272 x1487



**Eric Brown, Transportation and  
Shipping Committee Chair**  
CEO, JTP Transportation  
eric.brown@jtptransportation.com  
+1 (856) 307-1900

## 2023 Board Member Directory



**Kimberly A. D'Anella, Food Safety  
Committee Chair**

Managing Director, Monroe Transportation  
Consultants, LLC  
kim@monroeconsult.com  
+1 (609) 217-4033



**Dana Ehrlich, Sustainability and  
Environmental Committee Chair**

CEO, Verde Farms  
dana@verdefarms.com  
+1 (978) 979-4906



**Kim Holzner**

Head, JBS Imports North America  
kim.holzner@jbsa.com  
+1 (970) 506-7791



**Selwyn Jones**

SVP Supply Chain & Operations, Teys USA  
selwyn@teysusa.com  
+1 (312) 622-7991



**Andrew Kopic**

President, AFFCO USA  
andrew.kopic@affco.co.nz  
+1 (904) 508-7559



**Doug McNicholl**

Regional Manager – North America,  
Meat & Livestock Australia  
dmcnicholl@mla.com.au  
+1 (202) 705-9303

## 2023 Board Member Directory



**Denis Mendonca**

Director of Operations, Minerva Foods  
denis.mendonca@minervafoods.com  
+1 (786) 509-7672



**Olga Nunez**

President, Northwestern Meat Inc.  
olganunez88@hotmail.com  
+1 (305) 633-8112



**Tonn Pastore**

Vice President of Sales, ASC-MEYERS  
Tonn.Pastore@easternqualityfoods.com  
+1 (904) 395-2068



**Steve Sanger, Meetings, Revenue and Membership Committee Chair**

Snr. Vice President, Orleans International, Inc.  
stevesanger@orleansintl.com  
+1 (248) 467-0585



**Jack Schuyler**

Vice President – Global Procurement,  
US-Canada Region, Rich's  
jschuyler@rich.com  
+1 (716) 878-8019



**Len Steiner**

Founder and Principal, Steiner Consulting Group  
len@steinerconsulting.com  
+1 (800) 526-4612

## 2023 Board Member Directory



**Alan Tonks**

Owner, Alan Tonks & Associates, Inc.  
atonks@atassoc.com  
+1 (858) 935-9535



**Dan Wackerman**

President, John A. Steer Co.  
d.wackerman@jasteer.com  
+1 (215) 922-6610



**Michael T. Watson**

President, Secrest Watson International  
sales@secrestwatson.com  
+1 (925) 838-8888 | +1 (925) 708-4065



**Todd Wheelock**

Merchandising Manager, Cargill  
Todd\_wheelock@cargill.com  
+1 (316) 644-9235

## 2023 Committee Vice Chairs



**Lucas Da Costa, Sustainability and Environmental Committee Vice Chair**

National Logistics Manager, Minerva Foods  
Lucas.dcosta@minervafoods.com  
+1 (954) 224-3353



**Jeff Isenmann, Meetings, Revenue and Membership Committee Vice Chair**

Vice President, Orleans International, Inc.  
jeffisenmann@orleansintl.com  
+1 (248) 462-1235



**Mike Skahill, Trade Policy Committee Vice Chair**

Government Relations Director, Lineage Logistics  
mskahill@lineagelogistics.com  
+1 (571) 969-0062



**Jeff Sorbello, Food Safety Committee Vice Chair**

Owner & CEO, Atlantic Coast Freezers  
jeff@acfreezers.com  
+1 (609) 381-1209



**Trevor Yates, Transportation and Shipping Committee Vice Chair**

VP of Supply Chain, Teys USA  
trevor.yates@teysusa.com  
+1 (312) 967-7728



## MICA Membership Directory

### Importers and End-Users

#### **Affco New Zealand Ltd**

Andrew Kopic  
andrew.kopic@affco.co.nz  
+1 (904) 508-7559

#### **Agro America LLC**

Nicolas Rosenfeld  
nrosenfeld@agrosuper.com  
+1 (770) 730-8508

#### **APJ Meats**

Paul Sampson  
paul@apjmeats.com  
+1 (904) 373-3038

#### **Asher Import Export Inc.**

James Asher  
asher@aol.com  
+1 (323) 838-8577

#### **Atkins Ranch**

Pat Maher  
pat.maher@atkinsranch.com  
+1 (510) 440 8700

#### **Australian Agricultural Co.**

Deborah Funk  
dfunk@aaco.com.au  
+1 (404) 695-8151

#### **Birchwood**

Andrew Banchi  
abanchi@bwfoods.com  
+1 (262) 859-2272 x1487

#### **C.T.I. Foods LLC**

David Williams  
dewilliams@ctifoods.com  
+1 (682) 688-2330

#### **Canadian American Boxed Meat Corporation**

Craig Munro  
cmunro@canammeats.com  
+1 (905) 362-2727

#### **Cargill Food Solutions**

Todd Wheelock  
todd\_wheelock@cargill.com  
+1 (316) 291-1927

#### **Colorado Food Products, Inc.**

Kenneth Gurrentz  
kgurrentz@coloradofoods.com  
+1 (303) 409-8400

#### **Cypress Food Distributors**

Jeffrey Adler  
jadler@cypressfood.com  
+1 (954) 344-2900

#### **Dolan Foods Inc.**

Pearse Dolan  
pdolan@dolanfoods.com  
+1 (416) 207-8813

#### **Eastern Meat Solutions**

James Krall  
james.krall@sierrasc.com  
+1 (416) 252-2791

#### **Eastern Quality Foods**

Tonn Pastore  
tonn.pastore@easternqualityfoods.com  
+1(904) 395-2068

#### **empirical**

Craig Letch  
clech@empiricalfoods.com  
+1 (605) 217-8025

#### **Export Packers Co., Ltd.**

Brad Miller  
Bradley\_Miller@exportpackers.com  
+1 (905) 792-9700 x 4295

#### **Fletcher International**

Graham Lyon  
g.lyon@fletchint.com.au  
+61 2 6801 3135

#### **Fulton Market Group**

Paulina Matczuk  
paulina@fultonmarketgroup.com  
+1 (847) 845-0595

#### **G&C Food Distributors**

Fernando Munoz  
fmunoz@gcfoods.com  
+1 (800) 333-0949

## MICA Membership Directory

### **Galaxy International, Inc.**

Dwight Deicke  
dwight@galmeat.com  
+1 (412) 271-0620

### **Gaupp Meats**

Eric Gaupp  
e.gaupp@att.net  
+1 (215) 467-2625

### **Golden West Food Group**

Shawn Sparks  
shawns@gwfg.com  
+1 (323) 581-3663 x194

### **Greener Pastures USA, LLC**

Trevor Ellis  
trevor@GP-USA.net  
+1 (303) 601-3901

### **Gurrentz International Corporation**

Ryan Gurrentz / Jack Gurrentz  
ryan@gurrentz.com/jack@gurrentz.com  
+1 (412) 351-3200

### **H.W. Greenham**

Peter Greenham  
pgreenham@greenham.com.au  
+61 3 9644 6542

### **International Wholesalers**

Gilberto Gonzalez  
ggjwc@aol.com  
+1 (202) 529-0074

### **Interra**

John Donofrio  
jdonofrio@interrafood.com  
+1 (404) 446-1647

### **JBS**

Kim Holzner  
kim.holzner@jbsa.com  
+1 (970) 506-7791

### **John Soules Foods**

Kint Burdine  
kburdine@jsfoods.com  
+1 (903) 805-7285

### **Kilcoy Global Food USA**

Scott Blackwill  
SBlackwill@kilcoyglobalfoods.com  
+1 (970) 978-1567

### **L. N. Reynolds Company Ltd.**

Bruce Reynolds  
brucer@lnreynolds.com  
+1 (905) 840-3700

### **The Lamb Company**

Shane O'Hara  
shane@thelambcompany.com  
+1 (203) 529-9100

### **Lamex Foods**

Danielle Waterhouse  
danielle.waterhouse@lamexfoods.us  
+1 (952) 345-1962

### **Lawrence Wholesale LLC**

Dorith Marom / Ehud Eliyahu  
dorithm@lwllc.com / ehuda@lwllc.com  
+1 (203) 722-7231 / +1 (917) 724-7335

### **Link Snacks**

Tim Arndt  
timothy.arndt@jacklinks.com  
+1 (715) 466-6162

### **Local and Western of Texas, Inc.**

Gerald Darver  
gbd@wt.net  
+1 (214) 750-6633

### **Marcus Food Co.**

Monika Trochim  
mtrochim@marcusfoodco.com  
+1 (316) 686-7649

### **Marcus Technologies**

Shanna Motl  
smotl@marcustechnologies.com  
+1 (620) 464-0000

### **Marfrig**

Ignacio Paladino  
ignacio.paladino@marfrig.com  
+598 2624-0000 x1221

## MICA Membership Directory

### **Meateor Foods**

Tim Harty  
tim.harty@meateor.co.nz  
+64 (27) 441-2722

### **Meyer Natural Foods**

Tim Weiler  
tweiler@meyerfoods.com  
+1 (913) 345-9160

### **Midwest Food and Meat Distributors Inc.**

Joseph Aziz  
Yoseph.aziz@midwestmeat.org  
+1 (612) 788-4780

### **Minerva Foods**

Denis Mendonca  
denis.mendonca@minervafoods.com  
+1 (786) 509-7672

### **Multi-National Foods/Centennial Foodservice**

Rick Meixner  
rick.meixner@mnfoods.ca  
+1 (403) 261-8833

### **National Cortina Group**

Misha Cross  
misha@nationalcortina.com  
+1 (201) 825-6214

### **NH Foods Australia**

Paul Wallace  
pwallace@nh-foods.com.au  
+61 (2) 8918 0000

### **Northern Beef Industries, Inc.**

David Hausman  
meathaus@northernbeef.com  
+1 (361) 654-6180

### **Northwestern Meat, Inc.**

Olga Nunez  
olganunez88@hotmail.com  
+1 (305) 633-8112

### **Northwestern Selecta, Inc.**

Rafael Santiago  
rsantiago@northwesternselecta.com  
+1 (787) 781-1950

### **Oberto Brands**

Bruce Firmhaber  
bruce.firmhaber@oberto.com  
+1 (253) 437-6100

### **Orleans International, Inc.**

Steve Sanger  
stevesanger@orleansintl.com  
+1 (248) 855-5556 x337

### **Parker-Migliorini International, LLC**

Chris Scott  
chris.scott@pmifoods.com  
+1 (801) 531-6565

### **Purcell International**

John Purcell  
john@purcell-intl.com  
+1 (925) 933-6100

### **Quaker Valley Foods**

Dennis Snyder / Dan Diamond  
dsnyder@quakervalleyfoods.com /  
ddiamond@quakervalleyfoods.com  
+1 (215) 992-0900

### **Quirch Foods**

Anthony Schneider  
anthony.schneider@quirchfoods.com  
+1 (786) 318-5809

### **Rastelli International**

Anthony Rastelli  
Arastelli2@rastellis.com  
+1 (856) 223-9966

### **Restaurant Services Inc.**

Xinyu Wang  
xwang@rsilink.com  
+1 (305) 529-3400

### **Rich Jersey LLC**

Rich Jersey  
rich@richjerseyllc.com  
+1 (775) 741-7165

### **Rich Products**

Jack Schuyler  
jschuyler@rich.com  
+1 (716) 878-8019

## MICA Membership Directory

### **Ronald A. Chisholm, Ltd.**

Tom Lampiris  
tlampiris@rachisholm.com  
+1 (416) 967-8263

### **Rind International Trading Company**

David Rind  
david@rindinternational.com  
+1 (425) 453-0661

### **Secrest Watson International**

Mike Watson  
sales@secrestwatson.com  
+1 (925) 838-8888

### **Sure Good Foods**

Troy Warren  
twarren@suregoodfoods.com  
+1 (905) 288-1138

### **T. Verk Trading Inc.**

Terry Verk  
tverk@tverktrading.com  
+1 (416) 633-1261

### **Teys USA, Inc.**

Selwyn Jones  
selwyn@teysusa.com  
+1 (773) 570-4216

### **Thomas Foods International USA**

Fulton Coley  
fulton@thomasfoodsusa.com  
+1 (856) 832-3857

### **Tyson Foods, Inc.**

Rodney Sneed  
rodney.sneed@tyson.com  
+1 (479) 290-7380

### **Valley Food Produce, Inc.**

David G. Partridge  
davidgpartridge@valleyfoodproduce.com  
+1 (786) 615-6899

### **Verde Farms**

Dana Ehrlich  
dana@verdefarms.com  
+1 (603) 653-8257

### **Wild Bull Services**

Brian Anthony  
banthony@wildbullservices.com  
+1 (480) 535-3175

### **World Meat Supply**

Fernando Nascimento  
fn@wmsfoods.us  
+1 (786) 443-1584

## **Brokers, Export Packers, and Associations**

### **ABP North America**

Ian Lavery  
ian.lavery@abpireland.com  
+353 (41) 685 0200

### **Agriculture and Horticulture Development Board (AHDB)**

Phil Hadley  
phil.hadley@ahdb.org.uk  
+44 2476 935731

### **Alan Tonks Associates, Inc.**

Alan Tonks  
atonks@atassoc.com  
+1 (858) 985-9535

### **Alliance Group Ltd**

Darren Drury  
Darren.Drury@alliance.co.nz  
+64 27 272 4122

### **Anzco Foods Limited**

Shannon Marshall  
shannon.marshall@anzcofoods.com  
+64 3 358 2200

### **Asociación Argentina de Angus**

Javier Martínez del Valle  
directorejecutivo@angus.org.ar  
(54 11) 4774-0065

### **Asociación de la Industria Frigorífica del Uruguay (ADIFU)**

Claudia Gadea  
adifu@adifu.com.uy  
(+598) 2916 33 61

## MICA Membership Directory

### **AusvisionMeat Processors**

Kel Whitehouse  
K.Whitehouse@brmeats.com.au  
+61 8 9368 1933

### **Azul Natural Beef S. A.**

Tomas Zymnis  
tzymnis@devesa.com  
+54 (11) 5297-0000

### **Beef + Lamb New Zealand**

Jason Frost  
jason.frost@beeflambnz.com  
+1 (202) 679-7788

### **Bord Bia - Irish Food Board**

Henry Horkan  
henry.horkan@bordbia.ie  
+1 (212) 935-4505

### **Breeders & Packers Uruguay**

Camilo Giucci  
cgiucci@bpumeat.com  
(+598) 4362 17 00

### **Camara de la Industria Frigorifica**

Rosina Mesa De Barriola  
cif@camarafrigorifica.com.uy  
(+598) 2915 65 86

### **Cedar Meats Australia, Pty**

Tony Kairouz  
tony@cedarmeats.com  
+61 3 8398 1999

### **Dawn Meats**

Ronan O Meara  
ronan.omeara@dawnmeats.com  
(+353) 51 309200

### **Empacadora des Carnes Unidad Ganadera SA de CV (UGASA)**

Luis Jaime Lomelin Ibarra  
ljlomelin@ugasa.com.mx  
+52 449 914-3180

### **Fayman International**

Eamonn Morgan  
eamonn@fayman.com.au  
+61 3 9480 6200

### **Foyle Foods Group**

Michael Acheson  
michael@foylefoodgroup.com  
+1 (615) 594-2529

### **Frigorífico Copayan**

Lic. Belén de los Santos  
belen.delossantos@copayan.uy  
(+598) 9664 44 07

### **Frigorífico Las Piedras S. A.**

Fanny Gentile  
fgentile@flp.uy  
(+598) 2367 77 20

### **Frigorífico Rioplatense**

Juan Bisso  
jbisso@rioplatense.com  
+54911 6150 1279

### **Frigorífico San Jacinto – Nirea**

Nadina Mozas  
nmozas@nirea.com.uy  
+54911 4197 9973

### **Greenlea Premier Meats Ltd.**

Mike Goldfinch  
mike@greenlea.co.nz  
+64 7 957 3541

### **Harvey Industries Group**

Jon Liu  
jon.liu@harvestroad.com  
+61 8 9335 1244

### **Industrial Comercial San Martin S.A.**

Salvador Flores Esquivel  
sflores@sanmartin.com.ni  
(505) 2254-5011

### **Instituto de Promoción de la Carnes Vacuna Argentina (IPCVA)**

Isabel López  
i.lopez@ipcva.com.ar  
(54-11) 4328-8152

### **Instituto Nacional de Carnes (INAC)**

Conrado Ferber Artagaveytia  
presidencia@inac.uy  
(+598) 2916 04 30

## MICA Membership Directory

### Jason's Foods

Tom Lucaccioni  
tom@jasonsfoods.com  
+1 (847) 358-9901

### Kepak Food Group

Darragh Gannon  
Darragh.Gannon@kepak.com  
+353 87 6774786

### Kereru Foods Ltd

Gerard Brier  
gerard@kererufoods.com  
+64 22 639 0914

### Matadero Central S.A.

Carlos Vargas  
cvargas@macesa.com.ni  
(505) 2278-7770

### Maximeat Ltda.

Miguel Ameglio  
maximeat@netgate.com.uy  
(+598) 2915 77 15

### Meat & Livestock Australia Limited

Doug McNicholl  
dmcnicholl@mla.com.au  
+1 (202) 705-9303

### Meat Industry Association of New Zealand

Sirma Karapeeva  
sirma.karapeeva@mia.co.nz  
+64 4 495 8380

### Mexican Beef Exporters Association

Rogelio Perez Sanchez  
rperez@mexicanbeef.org  
+52 55 5639 3076 x245

### Midfield

Daniel Byrne  
dbyrne@midfield.com.au  
+61 3 5563 4444

### Opticarnes

Enrique Decker  
traders@opticarnes.com  
(+598) 2624 32 29

### Peak Commodities

Michael Williams  
michael@peakcom.nz  
+64 21 243 4002

### Pilot Brands

Kristen Perry  
kperry@pilotbrands.com  
+1 (775) 588-7853

### Polish Meat Association

Tomasz MocarSKI  
info@polskie-mieso.pl  
+48 22 830 26 56

### Quality Meat Scotland

Iain Macdonald  
imacdonald@qmscotland.co.uk  
+44 (0)131 510 7920

### Samex Australia

Jon Mander  
sales@samex.com.au  
+61 8 8413 8000

### Sanger Australia

Kaitlyn Annesley  
Kaitlyn.Annesley@bindareefood.com.au  
+61 2 9258 8333

### Steiner Buying Services

Len Steiner  
len@steinerconsulting.com  
+1 (603) 424-9664

### Stella Foods Australia Pty Ltd

Gerard Meyn  
gerard@stellafds.com.au  
+61 2 4367 0366

### Stewart-Miller Inc.

Don Stewart  
dstewart@stewmil.com  
+1 (847) 940-8000

### VanDrie Group

Ruth Bouwstra  
bouwstra@vandriegrup.com  
+31 (0)57 74 081 70

## MICA Membership Directory

### **Visual Pak Logistics**

Stone Beckwith  
stone.beckwith@vplogistics.com  
+1 (224) 265-7452

### **Welsh Meat Promotion Board**

Gwyn Howells  
ghowells@hybicig.cymru  
01970 625050

### **Wilson Hellaby**

Phil Ashton  
phila@hellaby.co.nz  
+64 9 270 9827

## **Cold Storage**

### **Americold**

Jay DeRoche  
Jay.DeRoche@americold.com  
+1 (888) 808-4877

### **Arcadia Cold**

PJ Chipman  
pchipman@arcadiacold.com  
+1 (843) 544-7545

### **Atlantic Coast Freezers**

Jeff Sorbello  
jeff@acfreezers.com  
+1 (856) 696-1770

### **CPS Distribution Service**

Suzanne Schaefer  
suzannes@cpsdist.com  
+1 (856) 769-4141

### **Derstine's/EZ3PL**

Zach Derstine  
zach@derstines.com  
+1 (267) 354-2696

### **KPAC Cold Storage**

Rich Burke  
rburke@kpaccoldstorage.com  
+1 (310) 522-1912

### **Lineage Logistics**

Daniel Lozada  
dlozada@lineagelogistics.com  
+1 (323) 881-7331

### **NEP Cold Storage**

Terry McGrath / Andy Roman  
tmcgrath@quakervalleyfoods.com /  
aroman@quakervalleyfoods.com  
+1 (215) 992-0900

### **RL Cold**

Matt Pesavento  
mpesavento@rlcold.com  
+1 (404) 391-5537

### **Sorbello Freezers**

Jeff Sorbello  
jeff@acfreezers.com  
+1 (856) 696-1770

### **Sorbello Refrigerated Services**

Heather Sorbello  
h.sorbello@sorbellorefrigerated.com  
+1 (856) 302-0220

### **T.C. Trading Company**

Phillip Hayes  
Phillip@tctradingcompany.com  
+1 (360) 332-5656

### **Timberline**

Mike Nolan  
office@timberlinecoldstorage.com  
+1 (856) 589-3130

## **Consultants and Service Providers**

### **Chudy Meat Consulting**

Bob Chudy  
bob@chudymeatconsulting.com  
+1 (610) 291-8874

### **Greener Pastures USA, LLC**

Trevor Ellis  
trevor@GP-USA.net  
+1 (303) 601-3901

### **Import Export Associates**

Leonard Lang  
len.lang@yahoo.com  
+1 (540) 848-5384

## MICA Membership Directory

### **Monroe Transportation Consultants, LLC**

Kim D'Anella / Vince D'Anella  
kim@monroeconsult.com /  
vinedanella@monroeconsult.com  
+1 (609) 217-4033 / +1 (609) 685-4702

### **PrimeXConnect**

Michael Chandler  
michael.chandler@primexconnect.com  
+61 (0) 477 004 769

### **Sorbello Imported Meat Services, LLC**

Fred Sorbello  
fred@sorbelloimportedmeatservices.com  
+1 (609) 820-8555

### **Customs Brokers**

#### **John A. Steer Company**

Dan Wackerman  
d.wackerman@jasteer.com  
+1 (215) 922-6610

#### **ROD INTERNATIONAL CHB SERVICES, LLC**

Juan Rodriguez  
jrodriguez@rodintl.net  
+1 (562) 622-0715

### **Trucking**

#### **JTP Transportation**

Eric Brown  
eric.brown@jtpttransportation.com  
+1 (856) 725-1509

#### **Sureshot Trans Inc**

Anthony Saracino  
tony@sureshottrucking.com  
+1 (856) 468-5700

#### **Weighmasters-Murphy, Inc.**

Frank Murphy  
frank@weighmastersmurphy.com  
+1 (562) 495-4144

### **Freight Brokers and Forwarders**

#### **A. N. Deringer Inc.**

Dave Mancini  
dmancini@anderinger.com  
+1 (802) 524-8110

#### **Freight Trac Services LLC**

Lukas Bardue  
Lukasb@freight-trac.com  
+1 (503) 878-8924

#### **NNR Global**

Kumi Fukuhara  
kfukuhara@nrrusa.com  
+1 (562) 753-7677

#### **Omni Freight Brokers**

Barbara Jones  
bjones@omnifreightbrokers.com  
+1 (904) 285-3704

### **Laboratories**

#### **Eurofins S-F Analytical Laboratories**

Dan Sardina  
dan.sardina@ft.eurofinsus.com  
+1 (262) 754-5300

### **Market Information and Research**

#### **Steiner Consulting Group**

Altin Kalo  
altin@steinerconsulting.com  
+1 (800) 526-4612

#### **Urner Barry Publications, Inc.**

Joseph Muldowney  
sales@urnerbarry.com  
+1 (732) 240-5330

### **Ocean Carriers**

#### **Marfret**

JoAnne Latham  
joanne.latham@marfret-na.com  
+1 (757) 627-3738

#### **MSC**

Pietro Pinto  
pietro.pinto@msc.com  
+1 (847) 376-5729



# MICA Membership Directory

## Ports

### **Delaware Avenue Enterprises, Inc.**

Eric Holt  
eholt@holtlogistics.com  
+1 (215) 435-1166

### **North Carolina Ports**

Landry Jones  
landry.jones@ncports.com  
+1 (910) 746-6406

### **Philaport**

Sean Mahoney  
smahoney@philaport.com  
+1 (215) 426-2600

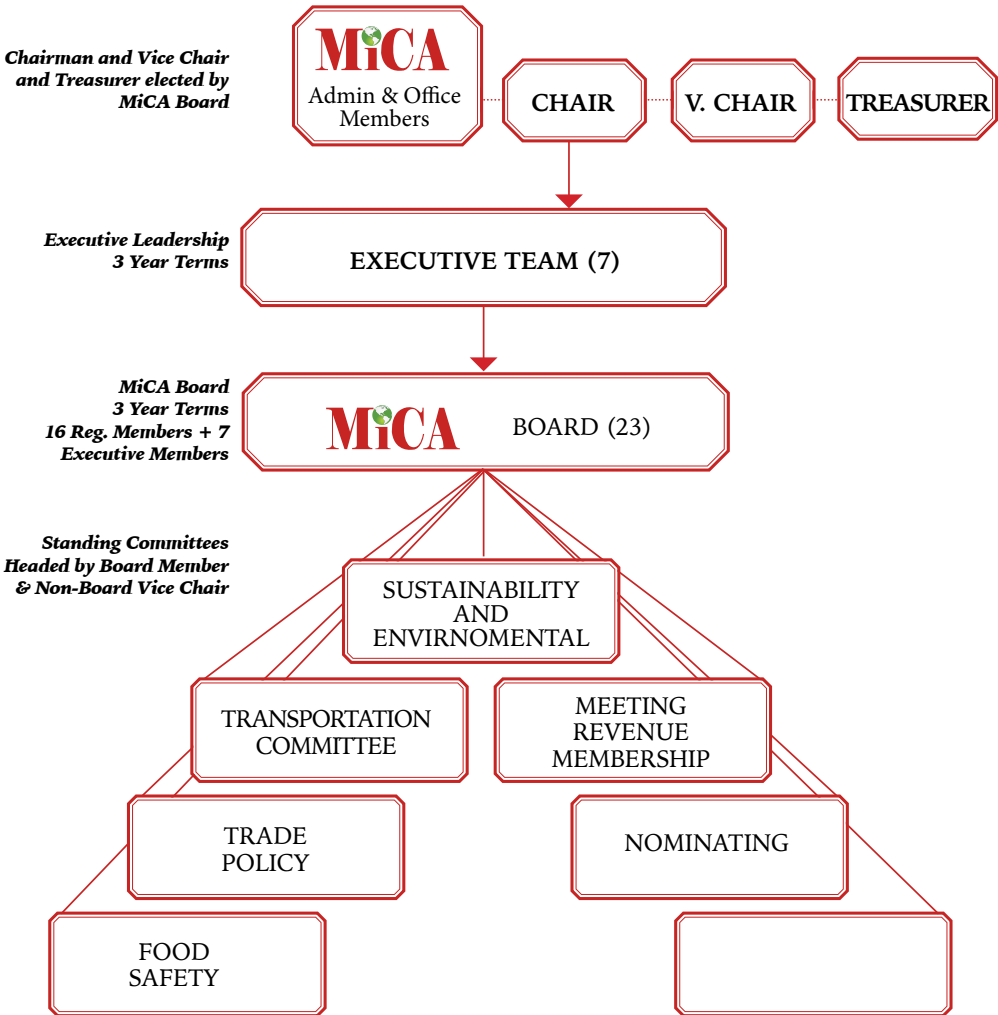
## Re-Exporters

### **International Products LLC**

Mark Russell  
mark@thebarkerynz.com  
+1 (301) 746-6411

## ORGANIZATIONAL CHART

as of May 2023



## Country Quotas

Imported fresh, chilled, and frozen beef products are subject to quotas.

Supplier Country	Annual Quota (MT)	Notes
Canada	Free access	NAFTA/USMCA partner
Mexico	Free access	NAFTA/USMCA partner
Nicaragua	Free access	CAFTA partner
Honduras	Free access	CAFTA partner
Dominican Republic	Free access	CAFTA partner
Costa Rica	Free access	CAFTA partner
Australia	378,214 + 50,000	Australia has free access on top of quota
New Zealand	213,402	
Argentina	20,000	
Uruguay	20,000	
Other Country	65,005	Brazil, Japan, Netherlands (veal), Ireland, United Kingdom, France (veal), Namibia

Please note that CBP uses kilograms (KG) to measure quota allocation in its weekly [Quota Status Report](#). One metric ton (MT) equals 1,000 KG.

MICA would like to thank Dan Wackerman of John A. Steer Co. for providing the following summary of beef importing information.

Fresh and frozen beef products are subject to a Tariff Rate Quota (TRQ), which allow for the importation of a specific quantity of goods – “inside quota” – at a reduced rate. Quantities of fresh/frozen beef imported in excess of the TRQ are subjected to the “outside quota” rate of 26.4% ad valorem.

In the Harmonized Tariff System of the United States (HTSUS) – aka “the tariff” – inside quota beef imports are classified in HTSUS Chapter 2 (Meat and Edible Meat Offal), and entered pursuant to HTSUS Additional Note 3, as follows:

3. The aggregate quantity of beef, entered under subheadings 0201.10.10, 0201.20.10, 0201.20.30, 0201.20.50, 0201.30.10, 0201.30.30, 0201.30.50, 0202.10.10, 0202.20.10, 0202.20.30, 0202.20.50, 0202.30.10, 0202.30.30 and 0202.30.50 in any calendar year shall not exceed the quantities specified in this note.

Imports under these provisions are subject to regulations issued by the United States Trade Representative.

**Common Examples HTSUS Classifications for “inside quota” TRQ beef products**

<b>Heading/Subheading/Stat. Suffix</b>	<b>Article Description</b>	<b>Rates of Duty</b>
0202.30.3000	Frozen boneless, Processed...Other (e.g., hamburger patties)	10% ad valorem
0202.30.5015	Frozen boneless...veal cuts	\$0.044/kg
0202.30.5025	Frozen boneless...rib cuts	\$0.044/kg
0202.30.5085	Frozen boneless...Other (than Rib, Chuck, Loin, Brisket...)	\$0.044/kg
0201.30.5015	Fresh or chilled (beef)	\$0.044/kg
0201.30.5025	Fresh or chilled...Veal cuts	\$0.044/kg
0201.30.5085	Fresh or chilled...Other...	\$0.044/kg

**Non-Quota Beef Products**

Certain other Beef products that are considered “prepared or preserved” – for example, cooked and cured beef – are not subject to the TRQ and are classified in HTSUS Chapter 16 as “Preparations of Meat.”

**Customs Binding Rulings on Classification**

Importers are strongly encouraged to avail themselves of Customs Binding Rulings on Classification for prospective imported beef products for which they are unsure of the proper HTSUS Classification and Duty Rates.

**Preferential Duty Treatment**

Imported beef products from certain Countries of Origin may be eligible for “Special” duty free and Merchandise Processing Fee Free treatment due to the relevant Free Trade Agreement (E.g., Australia FTA, Chile FTA...).

**U.S. Customs Collections**

In addition to Customs Duties, beef imports are typically subject to two Customs “User” Fees, as well as the applicable AMS Beef Checkoff Fee, as follows:

For Beef entered inside Quota	
Customs Duty	\$0.044/kg
Merchandise Processing Fee	0.3464% of FOB value (MIN \$29.66/MAX \$575.35)
Harbor Maintenance Fee	0.125% of FOB value
Beef Assessment	\$0.00511787/kg

For Beef entered outside Quota	
Customs Duty	26.40%
Merchandise Processing Fee	0.3464% of FOB value (MIN \$29.66/MAX \$575.35)
Harbor Maintenance Fee	0.125% of FOB value
Beef Assessment	\$0.00379102/kg
Possible safeguard duty	***

Key Meat Importer Links:

[CROSS Customs Rulings Online Search System \(cbp.gov\)](#)

[Commodity Status Report | U.S. Customs and Border Protection \(cbp.gov\)](#)

[Import & Export Library | Food Safety and Inspection Service \(usda.gov\)](#)

[FSIS Guidance for Importing Meat, Poultry, and Egg Products into the United States \(usda.gov\)](#)

# Velocity, Proximity, Flexibility...

## It's a Philly Thing.



PhilaPort offers more USDA approved warehouses than any other U.S. port — with better inland routes to get your cargo to customers faster and more efficiently. Take advantage of our highly-productive workforce and terminals designed for the meat trade.

**Ship Philly First.**



# PhilaPort



*“JTP strives to be one of the most consistent, highest performing, and honest transport companies to work with.”*

114 Delsea Drive South, Unit 14, Glassboro, NJ 08028  
(856) 307-1900  
[eric.brown@jtptransportation.com](mailto:eric.brown@jtptransportation.com)



**SIRS**

**Sorbello Refrigerated  
Services**

Heather Sorbello

[h.sorbello@](mailto:h.sorbello@)

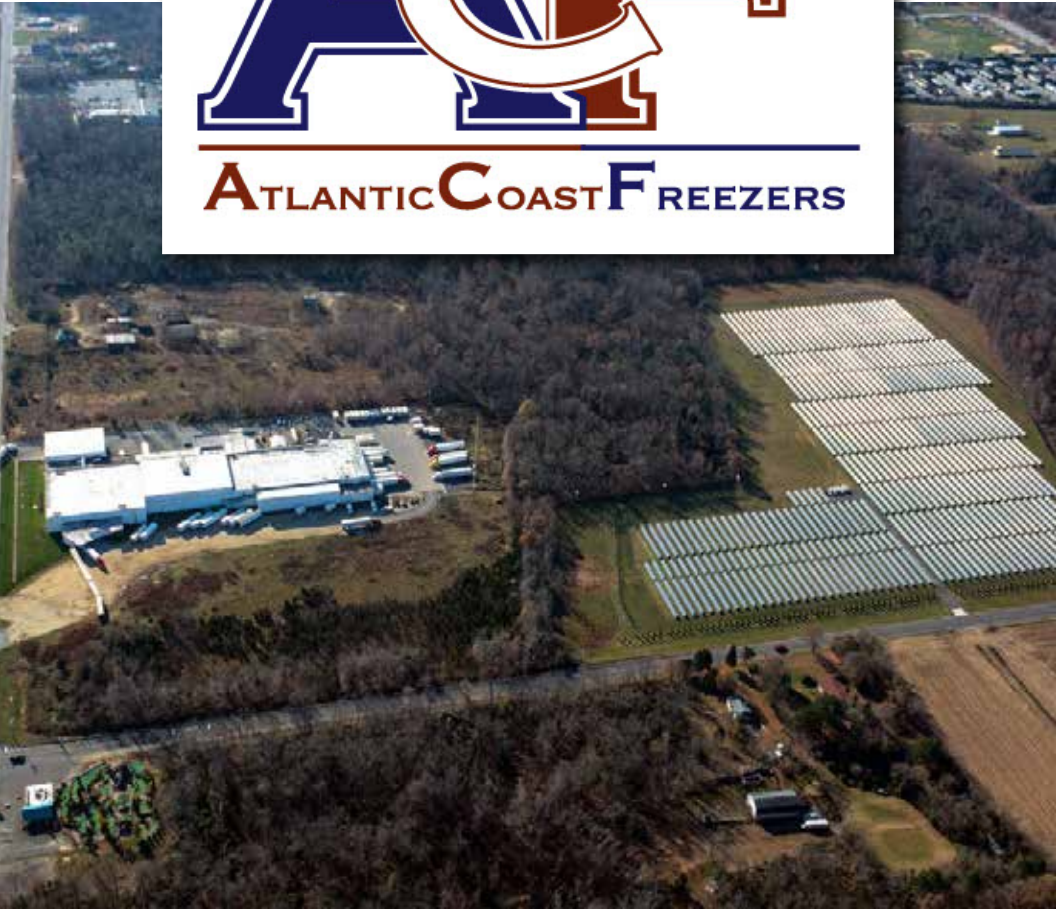
[sorbellorefrigerated.com](http://sorbellorefrigerated.com)

+1 (856) 302-0220





**A**TLANTIC **C**OAST **F**REEZERS



**KEEPING IT COOL  
BY KEEPING IT GREEN**



*Conveniently Located in the Greater Philadelphia Area*

***Your single source for:***

- USDA Inspection
  - Meats / Produce
- 3rd Party Logistics
- Transportation
- Cold Storage
- Dry Storage
  
- Drayage
- Ocean Container Devanning
- Carcass Devanning
- Import / Export
- TL / LTL
- Distribution

267.354.2696  
[www.ez3plonline.com](http://www.ez3plonline.com)

FAMILY OWNED  
 **DERSTINE'S**  
FOODSERVICE DISTRIBUTOR  
CUSTOMER DRIVEN 3245 State Rd, Sellersville, Pa 18960

# RASTELLI'S™

EST. 1976



**Optimize your supply chain effortlessly with our comprehensive services:**

**DRAYAGE**

**USDA CLEARING FACILITY**

**INLAND LOGISTICS TO AID IN PRODUCT MOVEMENT**

**TOLLING CAPABILITES FOR FURTHER PROCESSING  
(PORTION CUTTING FOR RETAIL OR FOOD SERVICE)**

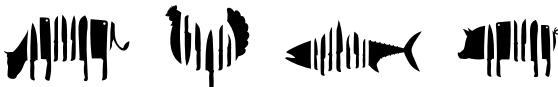
**AMPLE GRIND AND BURGER CAPACITY**

**IMPORT FACILITY**

504 SHARPTOWN ROAD  
SWEDESBORO NJ, 08085

**PROCESSING FACILITY**

300 HERON DRIVE  
SWEDESBORO NJ, 08085





# **SURESHOT TRANS**

## **SINCE 1997**

Bonded carrier specializing in container drayage and refrigerated transport within a 200 mile radius of Philadelphia, PA

President

Anthony Saracino

[tony@sureshottrucking.com](mailto:tony@sureshottrucking.com)

Refrigerated Transport

Ian Howey

[ian@sureshottrucking.com](mailto:ian@sureshottrucking.com)

Drayage Coordinator

856-468-5700



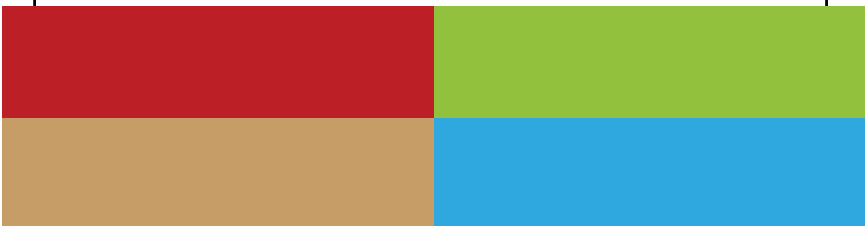
**esro**  
FOOD GROUP LLC



**FAYMAN**<sup>TM</sup>  
FOOD GROUP USA

*“Global Perspective,  
Local Advantage”*

**[www.esro.us](http://www.esro.us)**





**Interested in becoming  
a member to MICA, visit:**

**[www.micausa.org/membership/](http://www.micausa.org/membership/)**

---

We hope you find this directory a valuable resource. If you have any recommendations on how to enhance future editions of this directory, or you want to make any updates to your organization's entry, please notify Matt Allan ([matt@micausa.org](mailto:matt@micausa.org)).



*MICA graciously thanks our sponsors for supporting our first ever MICA Directory. This edition of our directory can also be found on the MICA website.*

*Thank you again Sponsors for your continued support of our valued association and its membership.*



supporting and promoting imported meat